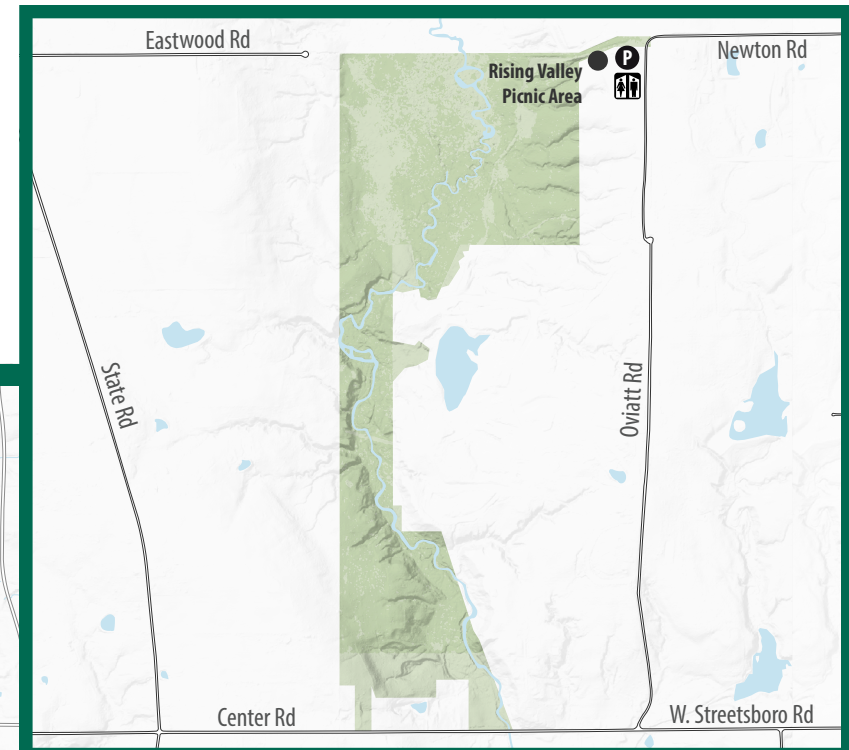
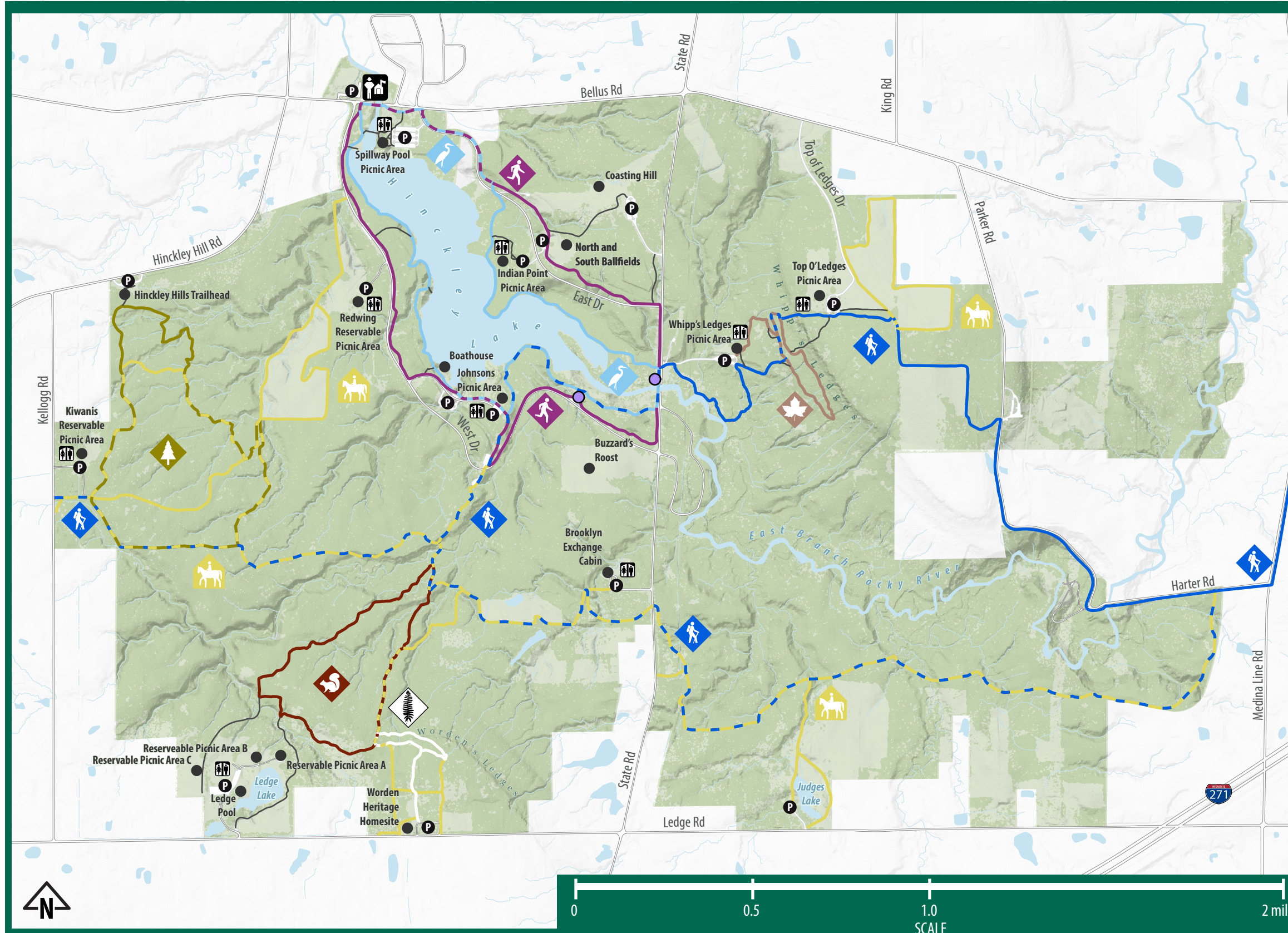
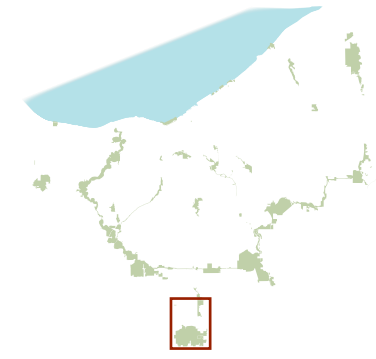





Hinckley Reservation



-  **Hinckley Hills Loop Trail:** 2.5 miles. This rugged trail crosses ravines and streams and follows sections of the Buckeye and bridge trails.
-  **Hinckley Lake Loop Trail:** 3.4 miles. This trail provides many opportunities for viewing wading birds and waterfowl as it winds around Hinckley Lake.
-  **Ledge Lake Loop Trail:** 2.5 miles. Starting from Ledge Lake or Worden's Homestead, this dirt trail meanders along creeks and out into open fields.
-  **Whipp's Ledges Loop Trail:** 1.25 miles. Connecting Whipp's Ledges and Top O' Ledges picnic areas, this hilly trail loops through the spectacular 350 ft. Sharon Conglomerate Ledges.
-  **Worden's Ledges Loop Trail:** 1 mile. This wooded trail winds through moss and fern covered ledges to reveal carvings made by Noble Stuart in the 1940s.
-  **Buckeye Trail:** 6 miles. A hilly and rugged portion of the 1,444-mile Buckeye Trail travels through Hinckley Reservation. The trail continues in a large loop around the state.
-  **All Purpose Trail:** 3.3 miles of paved trail for activities like cycling, walking and inline skating. Motorized vehicles are prohibited.
-  **Bridle Trail :** 6 miles. These markers denote the bridle trail. Bicycles and motorized vehicles are prohibited.
-  **Ranger Office**
-  **Emergency Phone**
- **Restrooms**