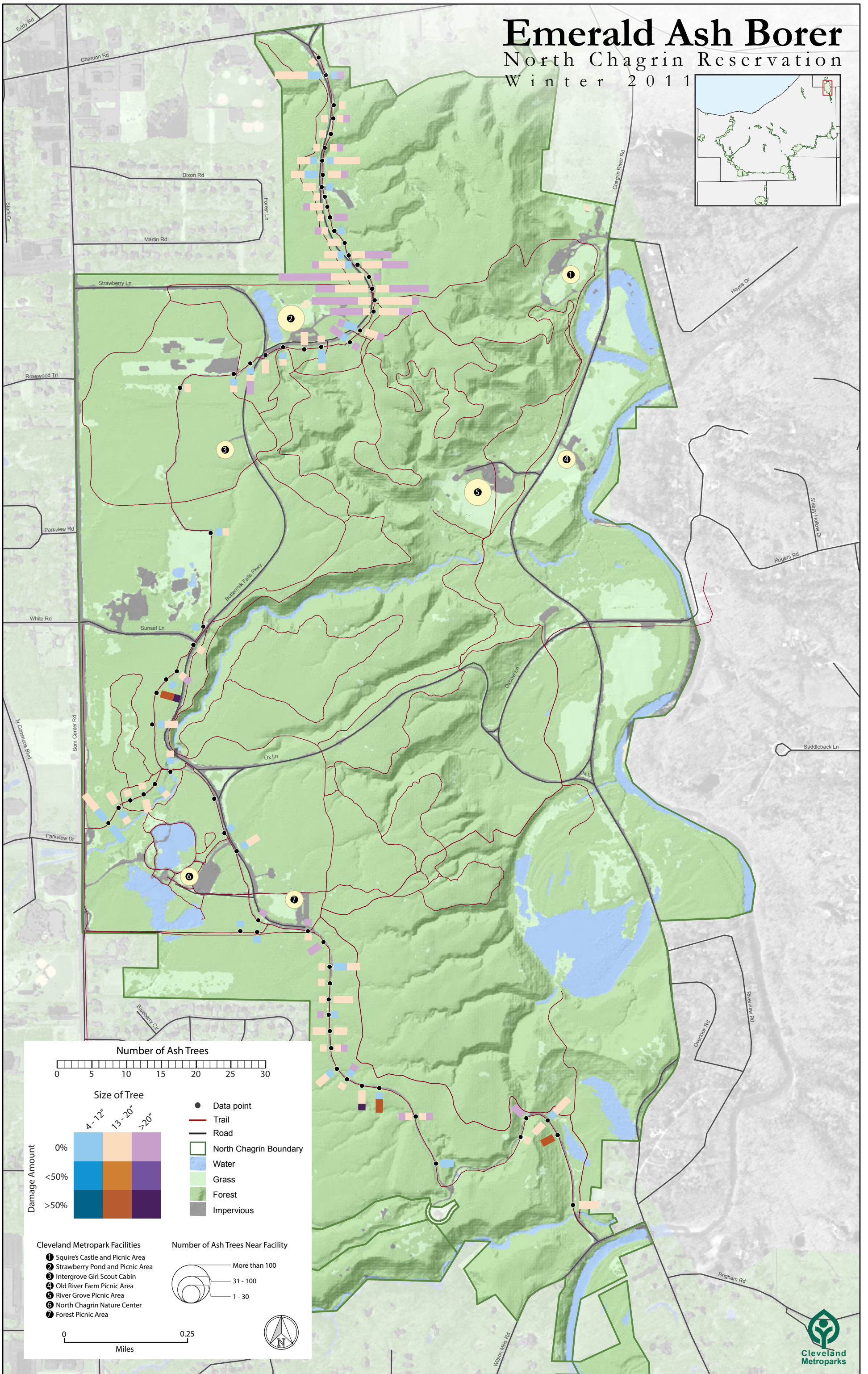
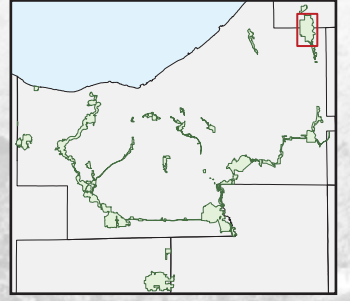


# Emerald Ash Borer

## North Chagrin Reservation

### Winter 2011



**Number of Ash Trees**

0 5 10 15 20 25 30

**Size of Tree**

4-12" 13-20" >20"

**Damage Amount**

0% <50% >50%

**Legend**

- Data point
- Trail
- Road
- North Chagrin Boundary
- Water
- Grass
- Forest
- Impervious

**Cleveland Metropark Facilities**

- 1 Squire's Castle and Picnic Area
- 2 Strawberry Pond and Picnic Area
- 3 Intergrove Girl Scout Cabin
- 4 Old River Farm Picnic Area
- 5 River Grove Picnic Area
- 6 North Chagrin Nature Center
- 7 Forest Picnic Area

**Number of Ash Trees Near Facility**

More than 100  
31 - 100  
1 - 30

0 0.25 Miles